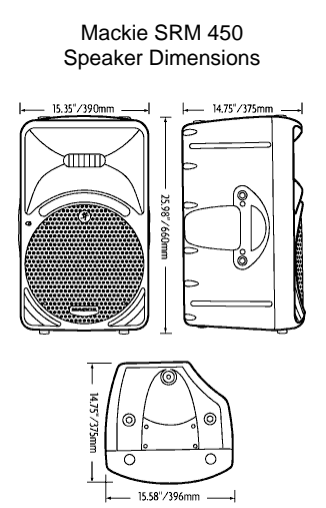
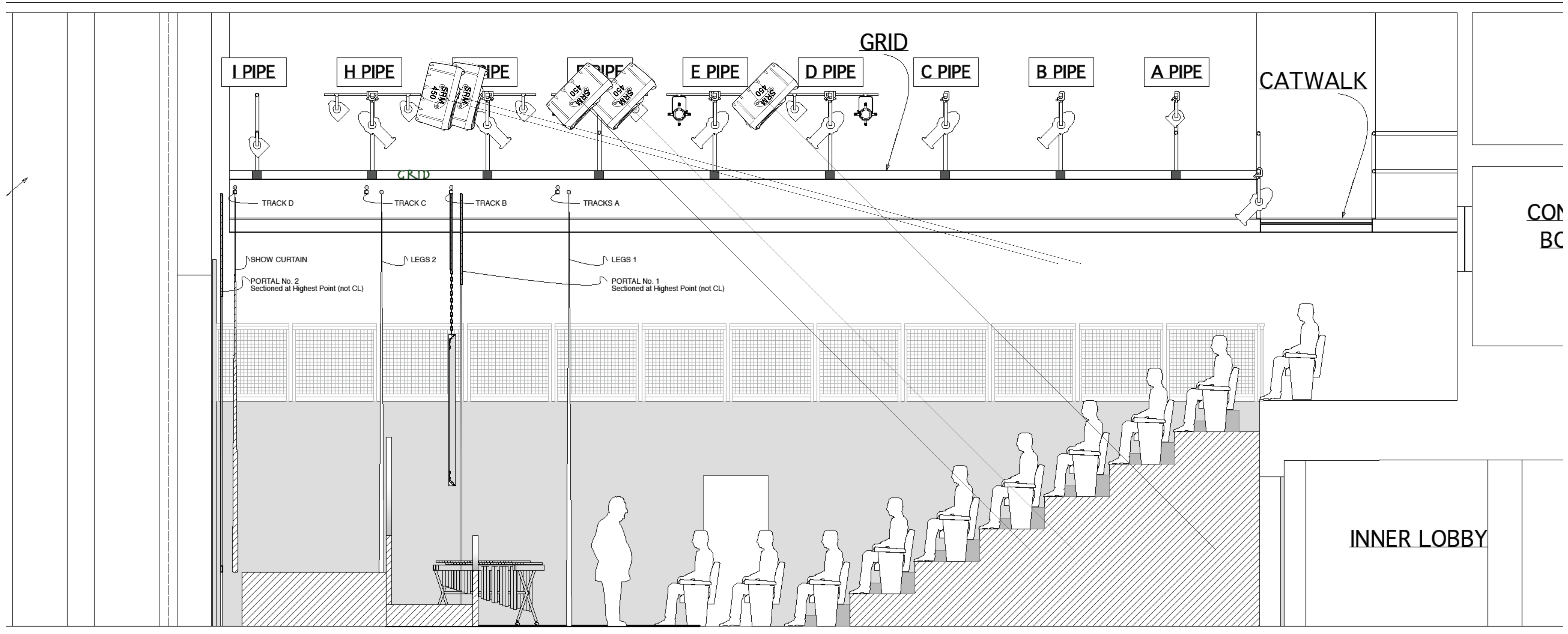


<p>SN 4126 SOUND DESIGNER</p>	<p><b>FYVUSH FINKEL LIVE!</b> Directed by Motl Didner Choreographed by Shorey Walker</p>			
	<p>Sound Design by Bruce Ellman The Folksbiene Yiddish Theatre at THE BARUCH PERFORMING ARTS CENTER</p>			
<p>Speaker Plan View</p>	<p>SIZE C</p>	<p>FSCM NO</p>	<p>DWG NO <b>SCALE IS NOT GUARANTEED!</b> <b>PLEASE REFER TO SET DRAWINGS!</b></p>	<p>REV 9/23/2010</p>
<p>Comms &amp; Backstage Monitors in house</p>	<p>SCALE 1/2" = 1'-0"</p>	<p>SHEET 1 OF 3</p>		

This drawing represents design concepts only. Designer is unaware of the structural requirements of the design, does not claim that the design can be safely implemented by technicians—not used by performers—and urges Producer to insure that design is realized by qualified personnel with all necessary modifications to insure performer, technician, and audience safety.  
All scenery to meet NYC fireproofing Standards.

S.D. 4582  
 SCENIC DESIGNER  
 SIGNATURE

<p>Groundplan</p> <p><b>טען גראונדפלאן</b></p>		<p>Plate No.</p> <p style="font-size: 2em; text-align: center;">1</p> <p>of Four</p>
<p>National Yiddish Theatre Folksbiene          Directed by Motl Didner          Set Design © 2010 by Roger Hanna          Scale: 1/2" = 1'-0"  <b>DATE: 25 September 2010</b></p>		



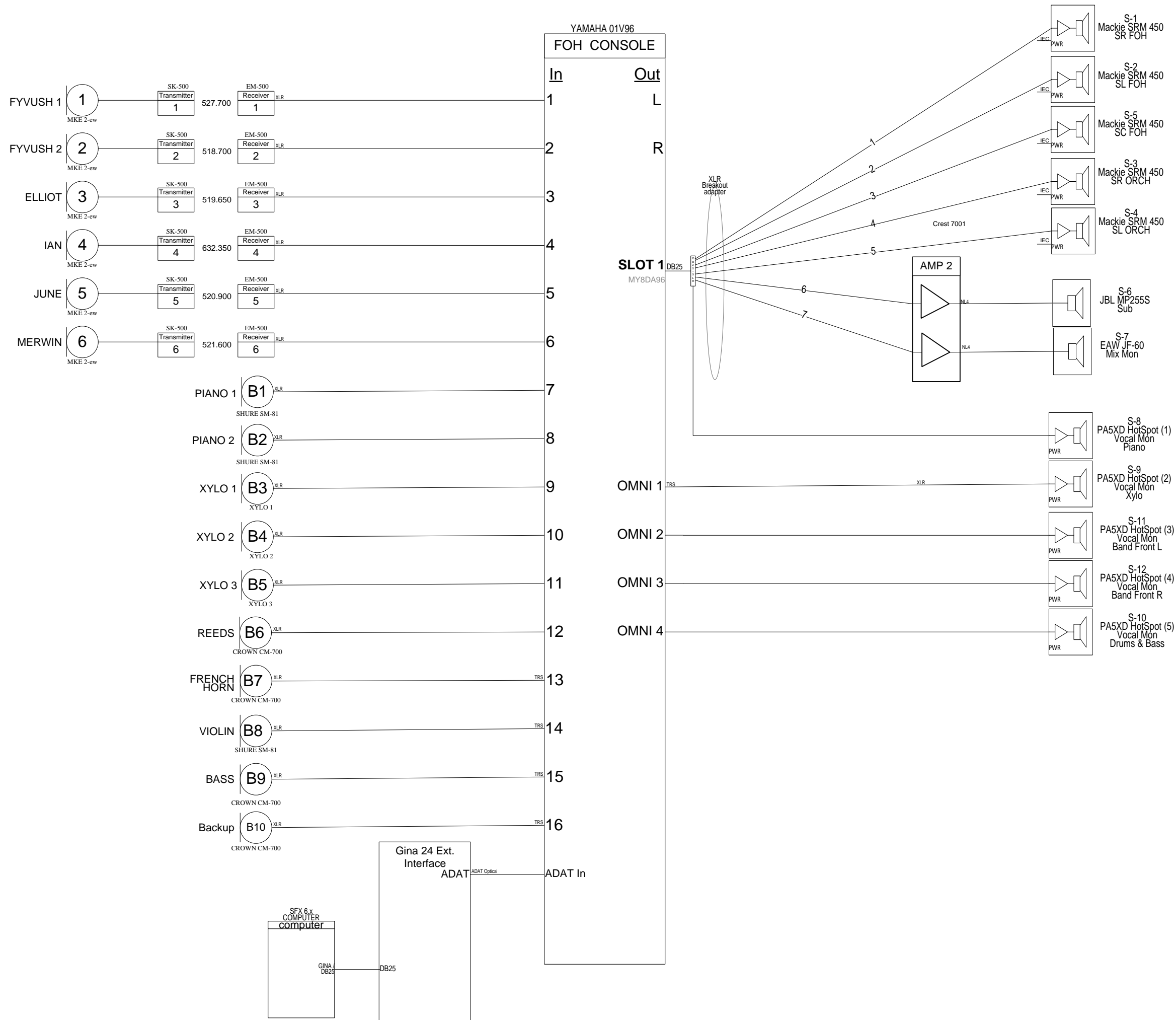
	<b>FYVUSH FINKEL LIVE!</b> Directed by Motl Didner Choreographed by Shorey Walker		
	Sound Design by Bruce Ellman The Folksbiene Yiddish Theatre at THE BARUCH PERFORMING ARTS CENTER		
Speaker Section View	SIZE C	FSCM NO.	DWG NO. SCALE IS NOT GUARANTEED! PLEASE REFER TO SET DRAWINGS!
Comms & Backstage Monitors in house	SCALE 1/2" = 1'-0"	SHEET	REV 9/23/2010 2 OF 3

This drawing represents design concepts only. Designer is unaware of the structural requirements of the design, does not claim that the design can be safely implemented by technicians—nor used by performers—and urges Producer to insure that design is realized by qualified personnel with all necessary modifications to insure performer, technician, and audience safety.  
All scenery to meet NYC fireproofing Standards.

S.D. 4582  
 SCENIC DESIGNER  
 SIGNATURE: *[Signature]*

Section  
**טען און און און און!**  
 National Yiddish Theatre Folksbiene  
 Directed by Motl Didner  
 Set Design © 2010 by Roger Hanna  
 Scale: 1/4" = 1'-0"  
 DATE: 25 September 2010

Plate No.  
**2**  
 of Four

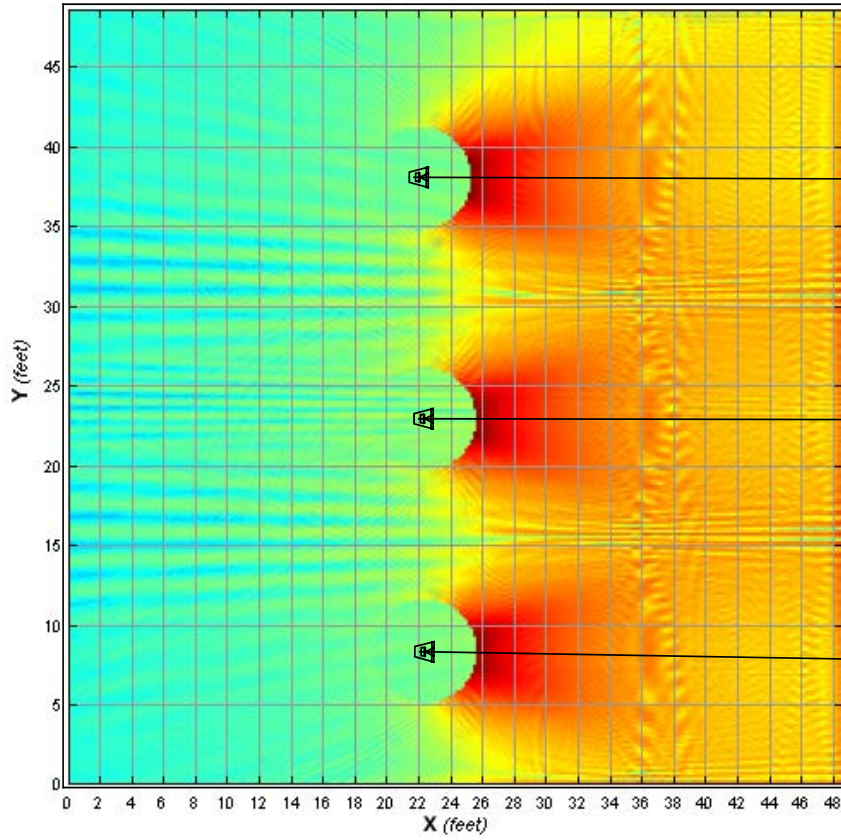


NOTES:

- Antenna distro and cable runs to be determined Onsite.
- Comms and backstage monitor will use Baruch's equipment. TBD onsite.
- With the exception of orchestra monitors, all other speakers are to be mounted above the Tension grid.

	<b>FYVUSH FINKEL LIVE!</b> Directed by Mott Didner Choreographed by Shorey Walker		
	Sound Design by Bruce Ellman The Folksbiene Yiddish Theatre at THE BARUCH PERFORMING ARTS CENTER		
System Flow Diagram	SIZE C	FSCM NO	REV 9/23/2010
Comms & Backstage Monitors in house	SCALE 1 : 1	DWG NO	SHEET 3 OF 3

### Sound Field



Air Attenuation On  
Temperature = 68.0°F  
Pressure = 1,013.25 mb  
Relative Humidity = 50.0%

Relative Bandwidth = 1/3 octave  
Center Frequency = 3,150 Hz  
Start Frequency = 2,812.5 Hz  
Stop Frequency = 3,562.5 Hz

### SPL

