

Speaker Hanging Notes:

The Mackie SRM 450 speakers all must be hung vertically with horns on top.

Subwoofer (Not Shown) resides under the risers.

All speakers except for the orchestra monitor, the sub, and the mix position monitor are hung above the grid.

Please pay attention to the drawn speaker focus Lines on the diagrams.

Plate Index	1 Master Plan
	2 Section & Deck
	3 Wall Elevations, Flats A-I
	4 Flats J-P, Screens, Masking, Revolving Door

THE ADVENTURES OF HERSHELE OSTROPOLYER
 Adapted, Chronographed and Directed by Eleanor Reissa
 Based on the play by M. Gershonson
 Later adapted by Joseph Glickson

Sound Design by Bruce Ellman
 The Folksbiene Yiddish Theatre at THE BARUCH PERFORMING ARTS CENTER

SN 4126
 SOUND DESIGNER
[Signature]

SIZE	FSCM NO	DWG NO	REV
C			3/23/2011

Speaker Plan View

Comms & Backstage Monitors in house

SCALE 1/2" = 1'-0"

SHEET 1 OF 3

This drawing represents design concepts only. Designer is unaware of the structural requirements of the design, does not claim that the design can be safely implemented by technicians—nor used by performers—and urges Producer to insure that design is realized by qualified personnel with all necessary modifications to insure performer, technician, and audience safety.

All scenery to meet NYC fireproofing Standards.

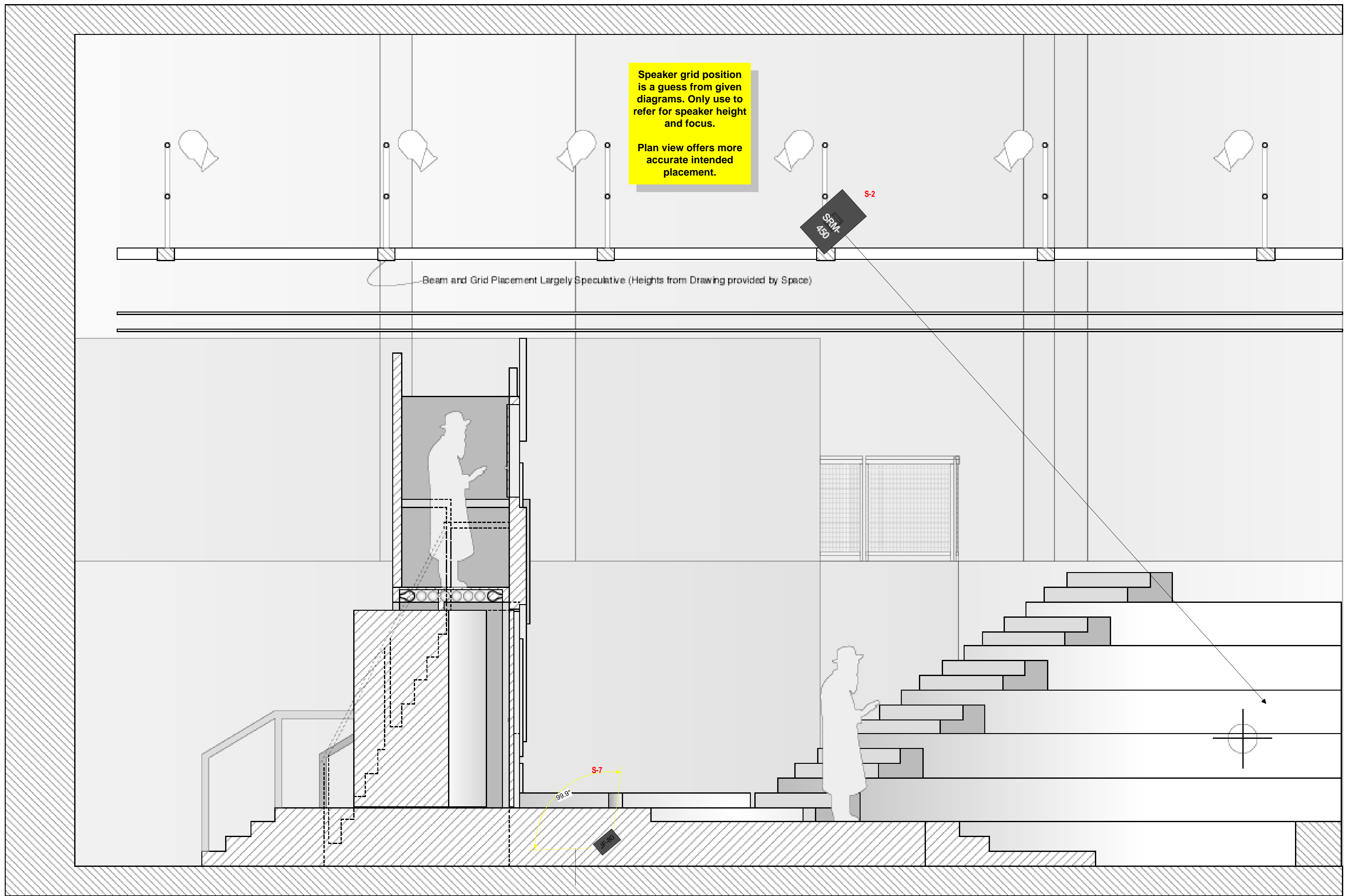
S.D. 4582
SCENIC DESIGNER
[Signature]

Master Groundplan

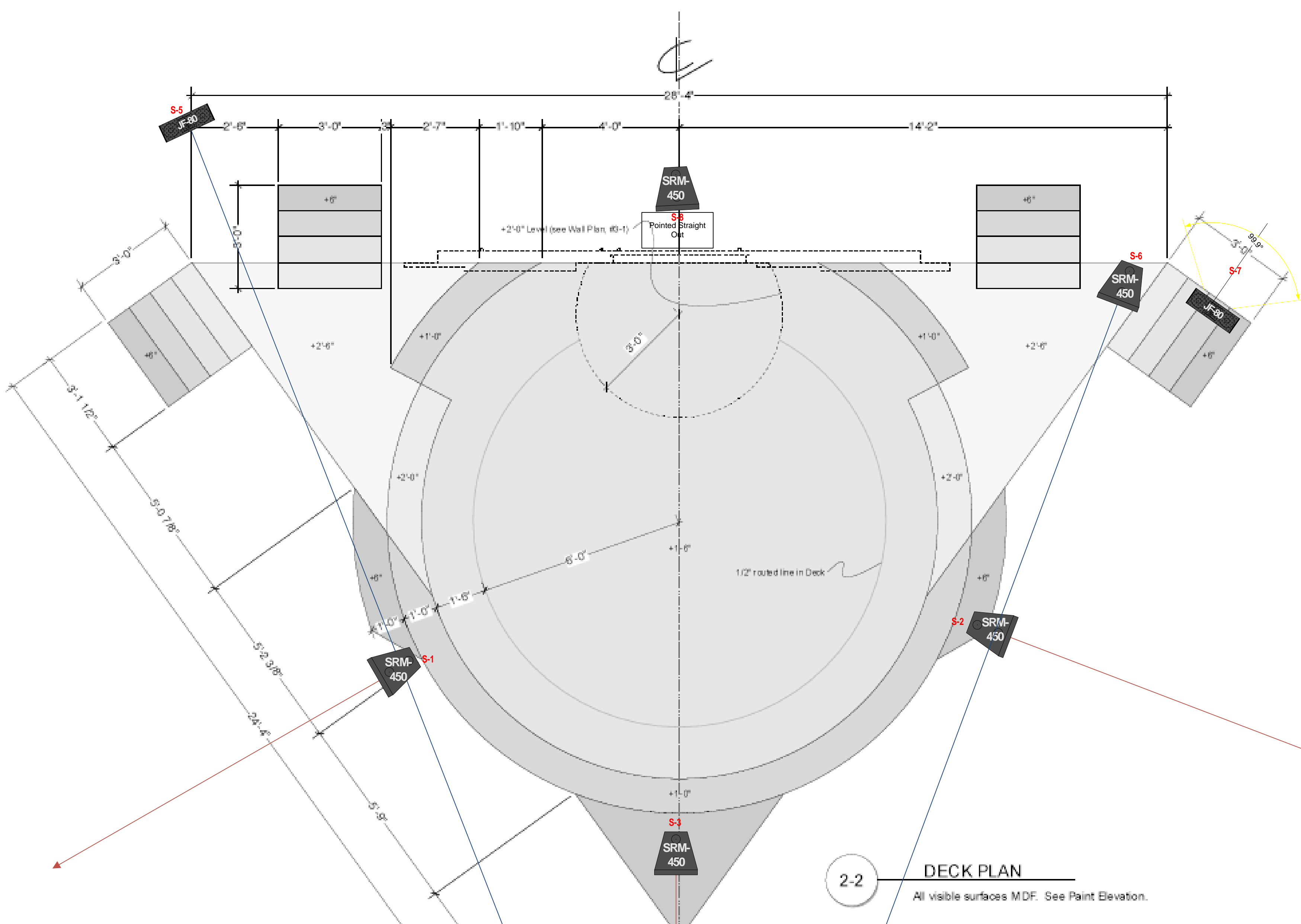
Hershele Ostropolover

National Yiddish Theatre Folksbiene
 Directed by Eleanor Reissa
 Set Design © 2010 by Roger Hanna
 Scale: 1/2" = 1'-0"
 26 March 2010

Plate No. **1** of Four



2-1 CL (of set) SECTION



2-2 DECK PLAN
All visible surfaces MDF. See Paint Elevation.

Plate Index	1 Master Plan 2 Section & Deck 3 Wall Elevations, Flats A-I 4 Flats J-P, Screens, Masking, Revolving Door
-------------	--

	THE ADVENTURES OF HERSCHELE OSTROPOLYER Adapted, Choreographed and Directed by Eleanor Reissa Based on the play by M. Gershonson Later adapted by Joseph Glickson Sound Design by Bruce Ellman The Folksbiene Yiddish Theatre at THE BARUCH PERFORMING ARTS CENTER			
	SIZE C	FSCM NO	DWG NO SCALE 1/2" = 1'-0"	REV 3/23/2011 SHEET 2 OF 3

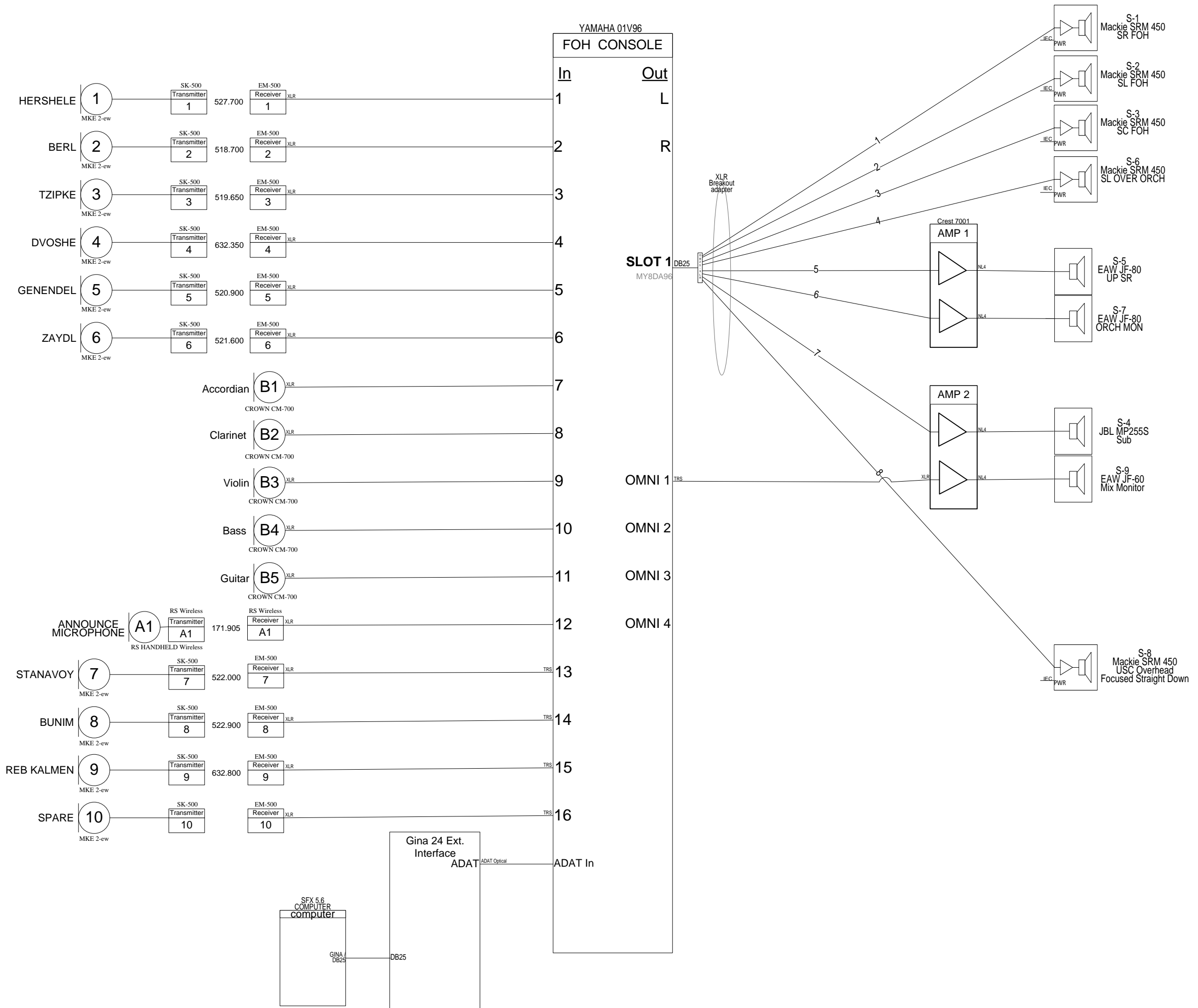
This drawing represents design concepts only. Designer is unaware of the structural requirements of the design, does not claim that the design can be safely implemented by technicians—nor used by performers—and urges Producer to insure that design is realized by qualified personnel with all necessary modifications to insure performer, technician, and audience safety.

All scenery to meet NYC fireproofing Standards.

S.D. 4582
 SCENIC DESIGNER
 SIGNATURE

Centerline (of Set) Section, Deck Plan
Hershele Ostropoloyer
 National Yiddish Theatre Folksbiene
 Directed by Eleanor Reissa
 Set Design © 2010 by Roger Hanna
 Scale: 1/2" = 1'-0"
 26 March 2010

Plate No.	2
of Four	



NOTES:

Antenna distro and cable runs to be determined Onsite.

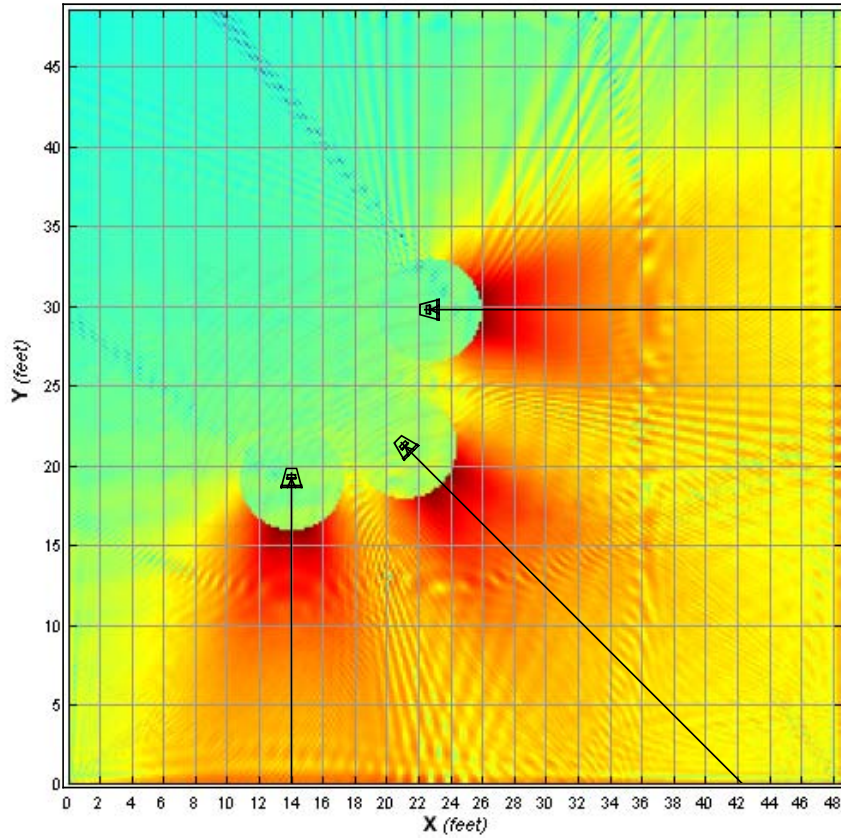
Comms and backstage monitor will use Baruch's equipment. TBD onsite.

With the exception of the JF80 orchestra monitor On the floor, all other speakers are to be mounted above the Tension grid.

An additional upstage speaker should be anticipated.

	THE ADVENTURES OF HERSHELE OSTROPOLYER Adapted, Choreographed and Directed by Eleanor Reissa Based on the play by M. Gershonson Later adapted by Joseph Glickson		
	Sound Design by Bruce Ellman The Folksbiene Yiddish Theatre at THE BARUCH PERFORMING ARTS CENTER		
System Flow Diagram	SIZE C	FSCM NO	REV 5/23/2010
Comms & Backstage Monitors in house	SCALE 1 : 1	DWG NO	SHEET 3 OF 3

Sound Field



Air Attenuation On
Temperature = 68.0°F
Pressure = 1,013.25 mb
Relative Humidity = 50.0%

Relative Bandwidth = 1/3 octave
Center Frequency = 3,150 Hz
Start Frequency = 2,812.5 Hz
Stop Frequency = 3,562.5 Hz

SPL

